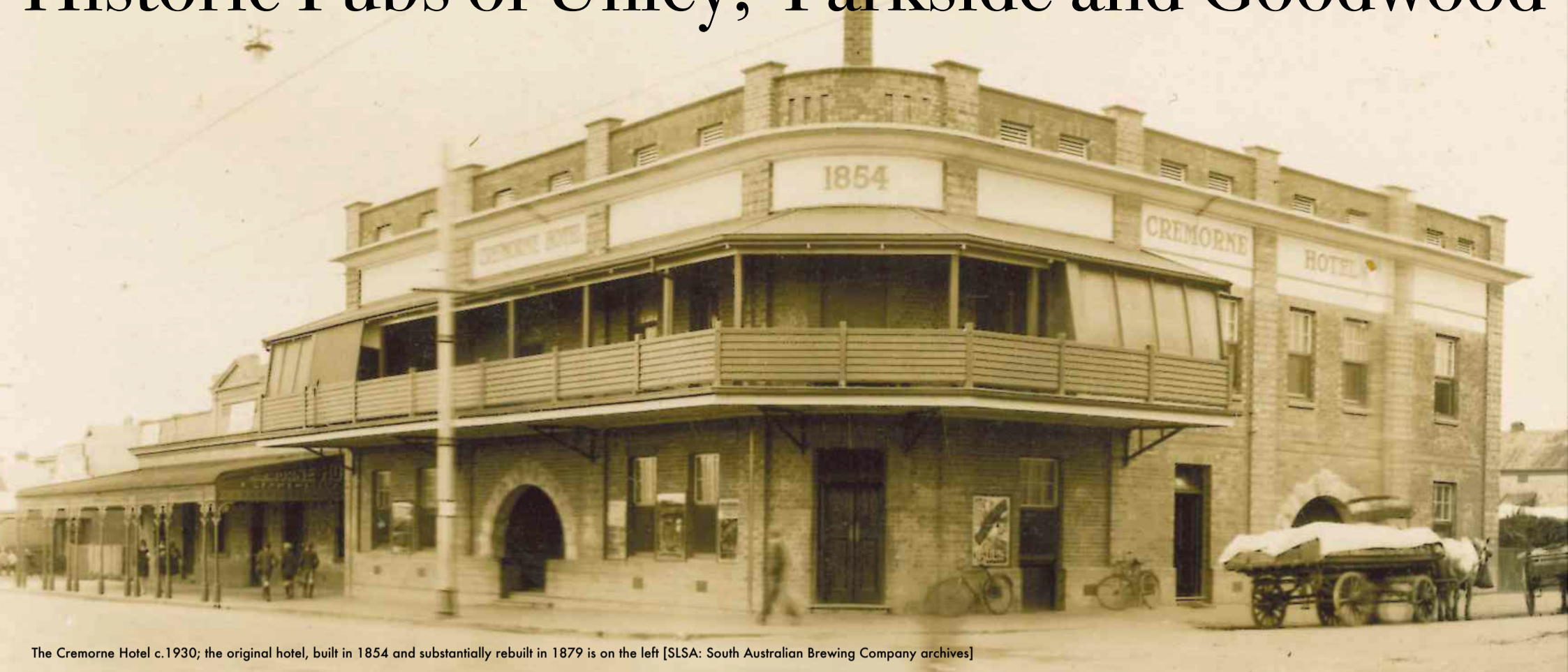


# Historic Pubs of Unley, Parkside and Goodwood



The Cremorne Hotel c.1930; the original hotel, built in 1854 and substantially rebuilt in 1879 is on the left [SLSA: South Australian Brewing Company archives]



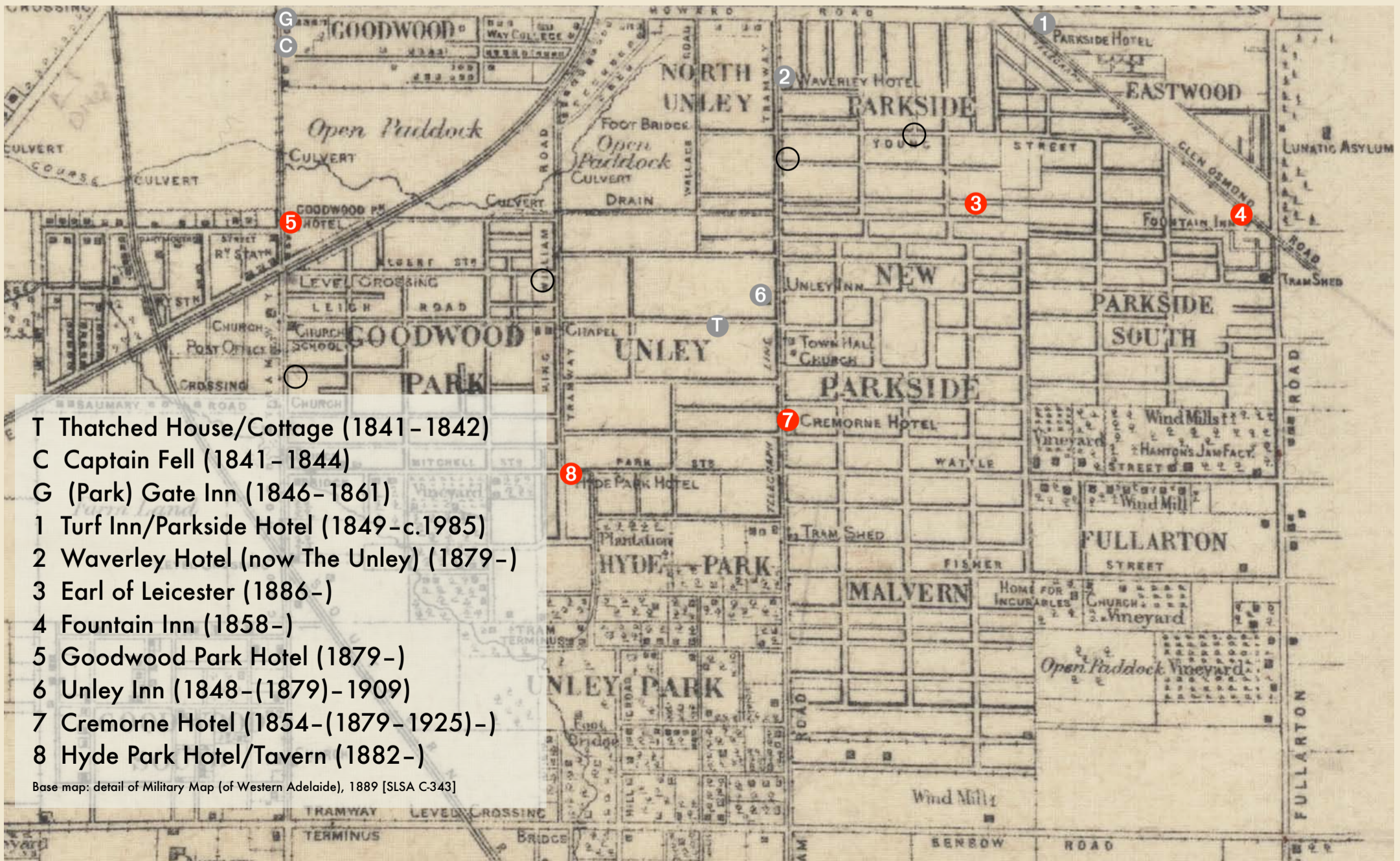
Waverley Hotel (1879-) in c.1970 before demolition; now "The Unley"



Turf Inn, later Parkside Hotel/Tavern (1849-1970), in c.1878; demolished in the mid-1980s, replaced by a family restaurant or fast-food outlets



Earl of Leicester Hotel (1886-) in c.1890  
The last pub licensed in the area



- T Thatched House/Cottage (1841-1842)
- C Captain Fell (1841-1844)
- G (Park) Gate Inn (1846-1861)
- 1 Turf Inn/Parkside Hotel (1849-c.1985)
- 2 Waverley Hotel (now The Unley) (1879-)
- 3 Earl of Leicester (1886-)
- 4 Fountain Inn (1858-)
- 5 Goodwood Park Hotel (1879-)
- 6 Unley Inn (1848-(1879)-1909)
- 7 Cremorne Hotel (1854-(1879-1925)-)
- 8 Hyde Park Hotel/Tavern (1882-)

Base map: detail of Military Map (of Western Adelaide), 1889 [SLSA C343]